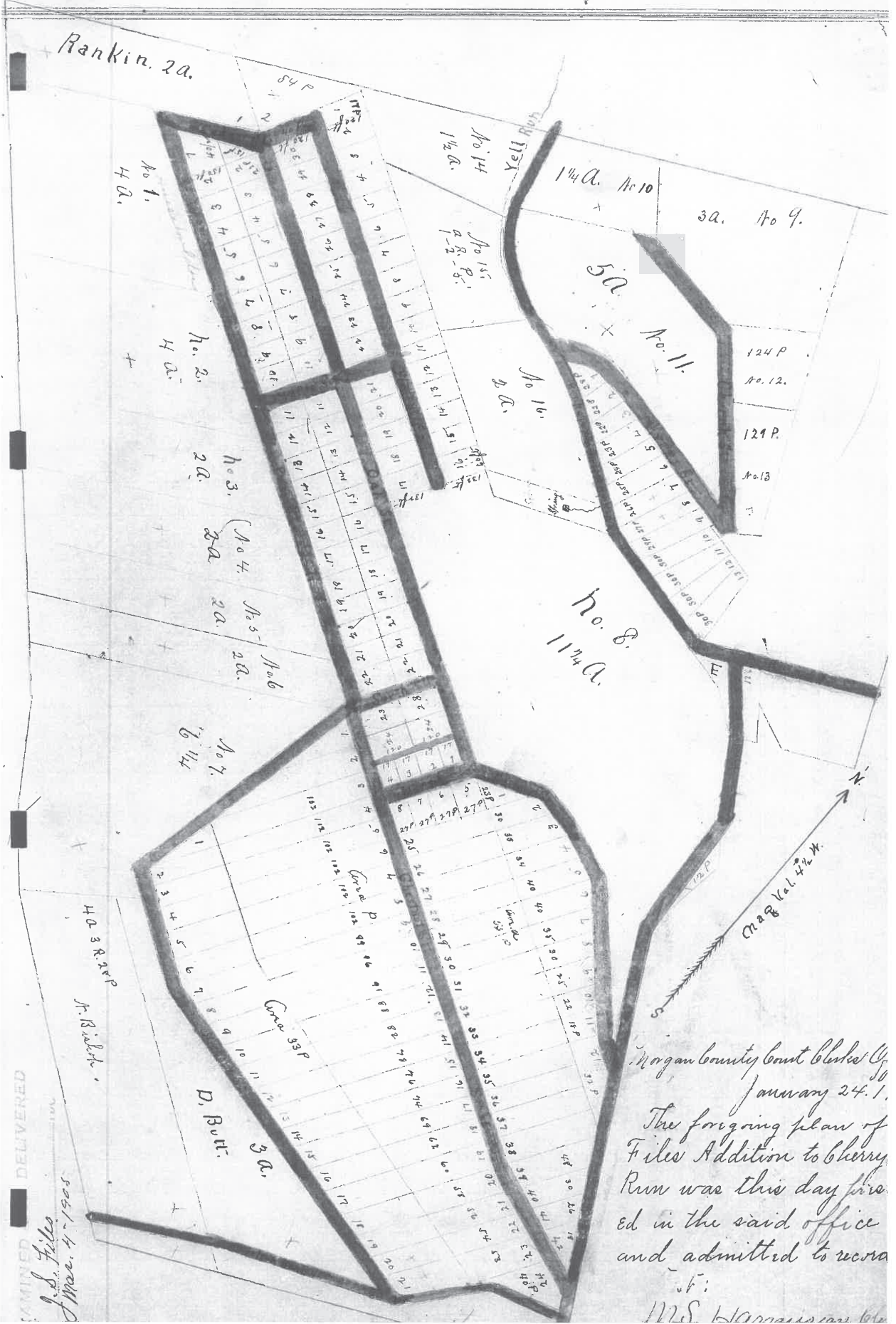


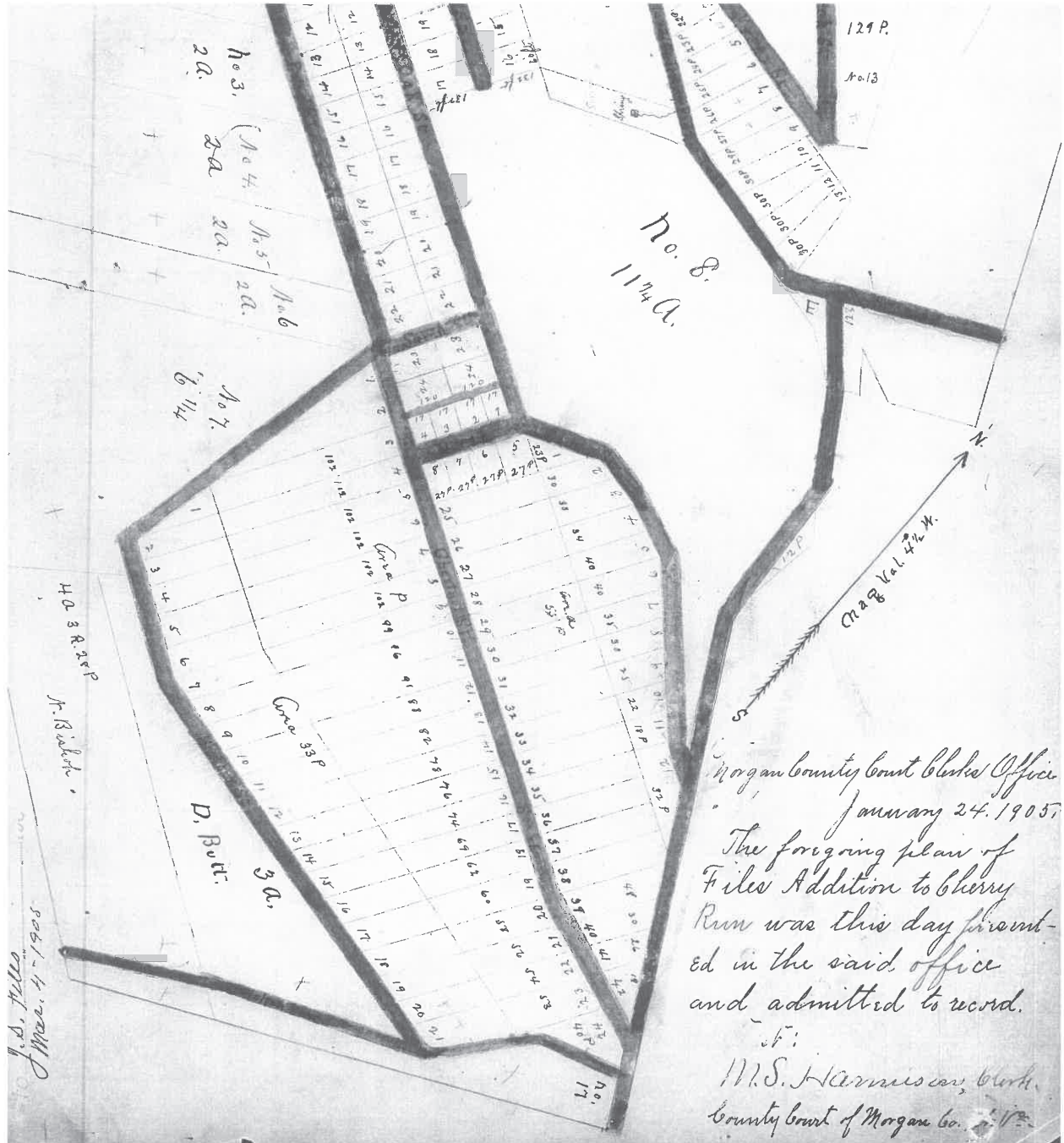
FILES ADDITION TO CHERRY RUN.



EXAMINED DELIVERED

J. S. Files
Mar. 4 - 1865

Morgan County Court Clerk's Office
 January 24, 1865
 The foregoing plan of
 Files Addition to Cherry
 Run was this day pre-
 sent in the said office
 and admitted to record
 of:
 W. S. Hays



Morgan County Court Clerk's Office
 January 24, 1905
 The foregoing plan of
 Files Addition to Cherry
 Run was this day present-
 ed in the said office
 and admitted to record.
 W. S. Harmon, Clerk,
 County Court of Morgan Co.

J. S. Jiles,
 Mar. 4 - 1905

H.D. 3 R. 3 S. P.
 N. 13

No. 7
 6 1/4

No. 3.
 2a.
 No. 4.
 2a.
 No. 5.
 2a.
 No. 6.
 2a.

No. 8.
 114a.

129 P.
 No. 13

Mag. Val. 422 W.

D. Butt.
 3a.

No. 17