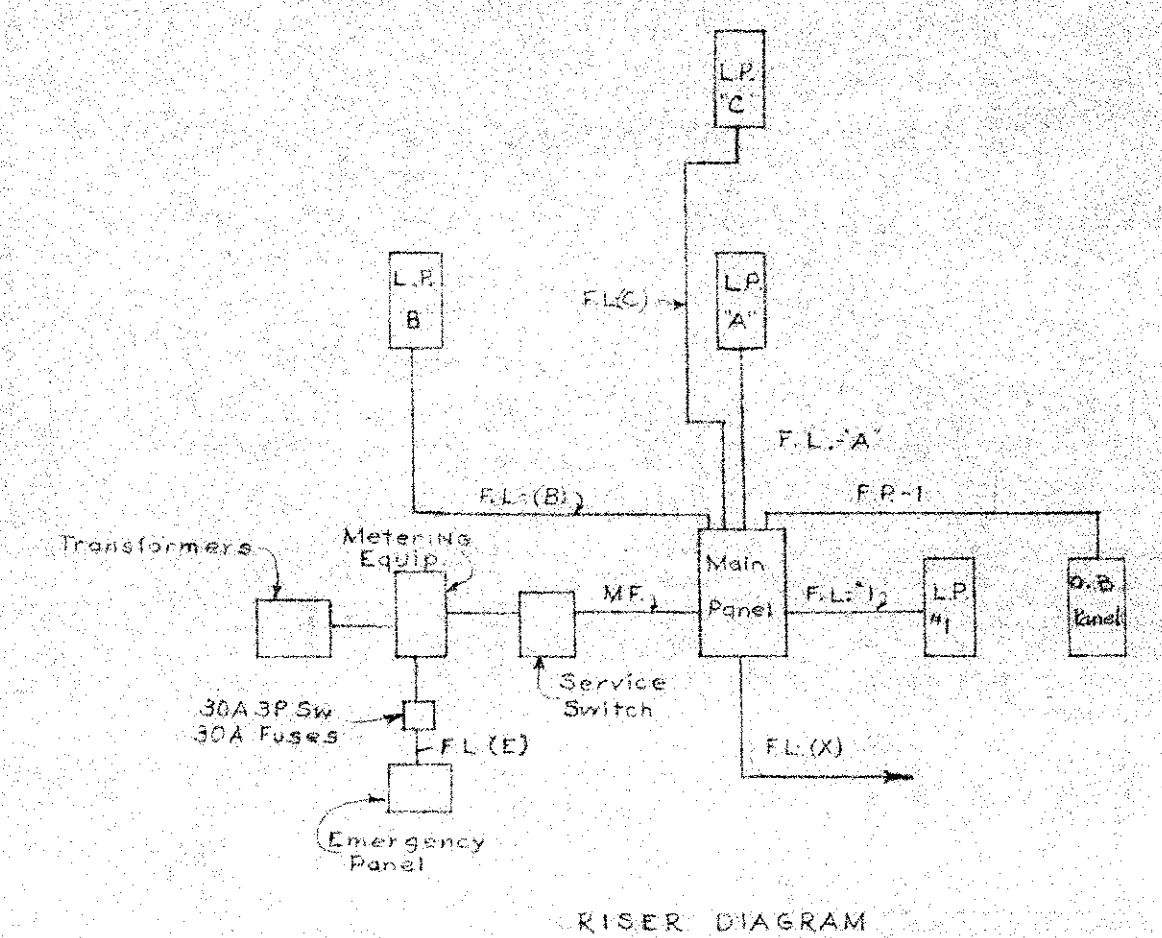


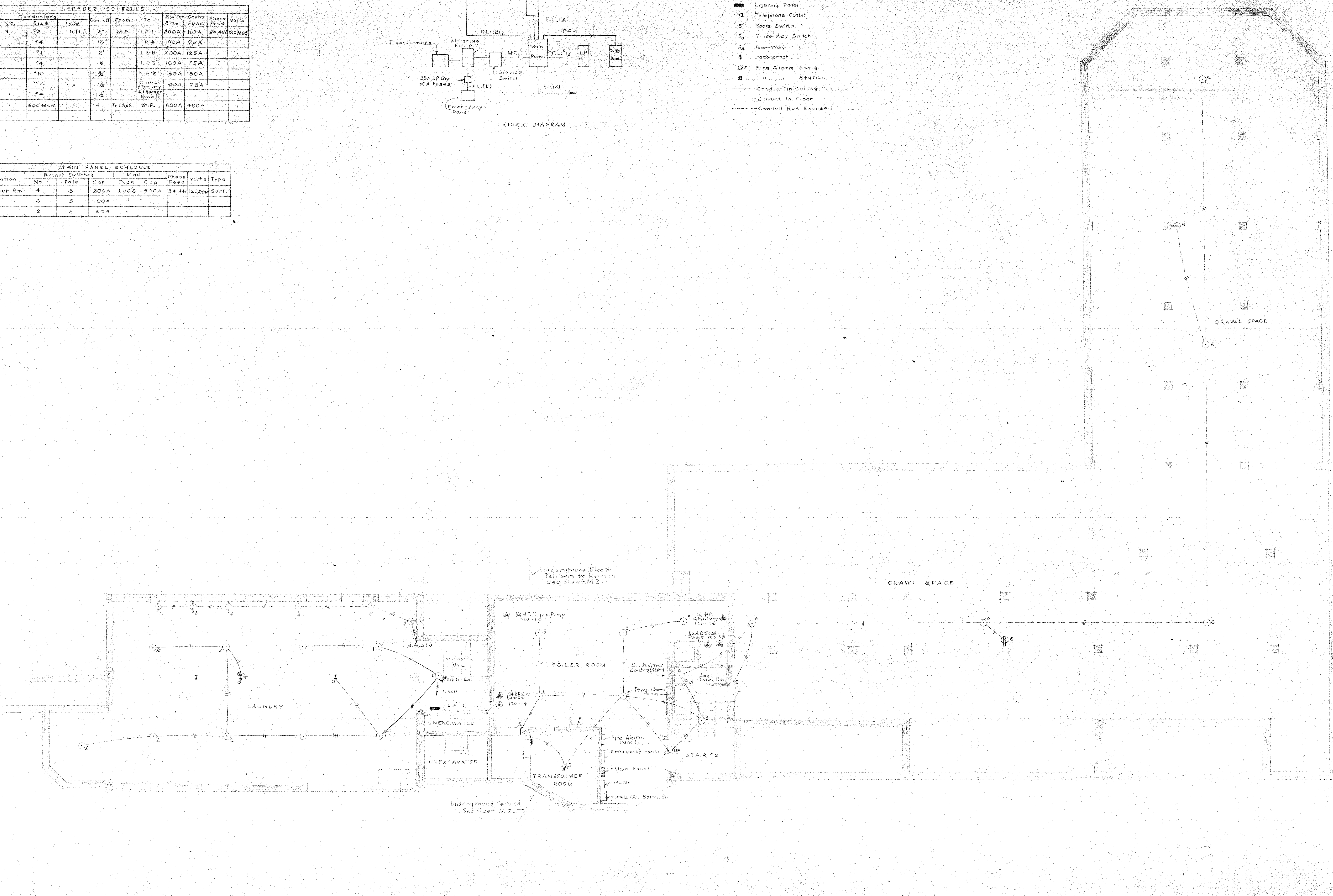
LIGHTING PANEL SCHEDULE										
Panel	Location	Qty	Branch	Main	Phase	Volts	Type			
Location	Equip.	No.	Panel	Type	Feed	Feed				
L.P.-1	Convent	2	1	30A 15A	100A	3P-4W	120/200	Surf.		
L.P.-A	School	2	1	30A 15A	100A	3P-4W	120/200	Surf.		
L.P.-B	Auditorium	2	1	30A 15A	100A	3P-4W	120/200	Surf.		
L.P.-C	School	2	1	30A 15A	100A	3P-4W	120/200	Surf.		
L.P.-E	Writers	8	1	30A 15A	100A	3P-4W	120/200	Surf.		

FEEDER SCHEDULE										
Feeder No.	Conductors	From	To	Switch	Control	Phase	Volts			
No.	Size	Type	Panel	Size	Feed	Feed				
FL-1	#2	RH	M.P.	LP-1	200A	110A	3P-4W	120/200		
FL-A	#4	"	LP-A	100A	75A	"	"			
FL-B	#1	"	LP-B	200A	125A	"	"			
FL-C	#4	"	LP-C	100A	75A	"	"			
FL-E	#10	"	LP-E	60A	30A	"	"			
FL(A)	#4	"	Church Rectory	100A	75A	"	"			
FP-1	#4	"	1 1/2"	"	"	"	"			
MF	600 MCM	"	4"	Transf. M.P.	600A	400A	"			

MAIN PANEL SCHEDULE							
Location	No.	Panel	Cap.	Main	Phase	Volts	Type
Boiler Rm	1	3	200A	LUGS	600A	3P-4W	120/200 Surf.
	2	3	100A	"	"	"	"
	2	3	60A	"	"	"	"



- LEGEND**
- Ceiling Outlet (for surface mtg)
 - ⊗ Wall Outlet (for flush mtg)
 - Duplex Receptacle
 - ⊙ Clock Outlet (Program System)
 - ⊕ Exit Sign
 - ⊖ Vaporproof Outlet
 - ⊞ Range Outlet
 - ⊟ Power Outlet
 - ⊠ Program Outlet
 - ⊡ Lighting Panel
 - ⊣ Telephone Outlet
 - ⊤ Room Switch
 - ⊥ Three-Way Switch
 - ⊦ Four-Way
 - ⊧ Vaporproof
 - ⊨ Fire Alarm Gong
 - ⊩ Station
 - Conduit in Ceiling
 - Conduit in Floor
 - Conduit Run Exposed

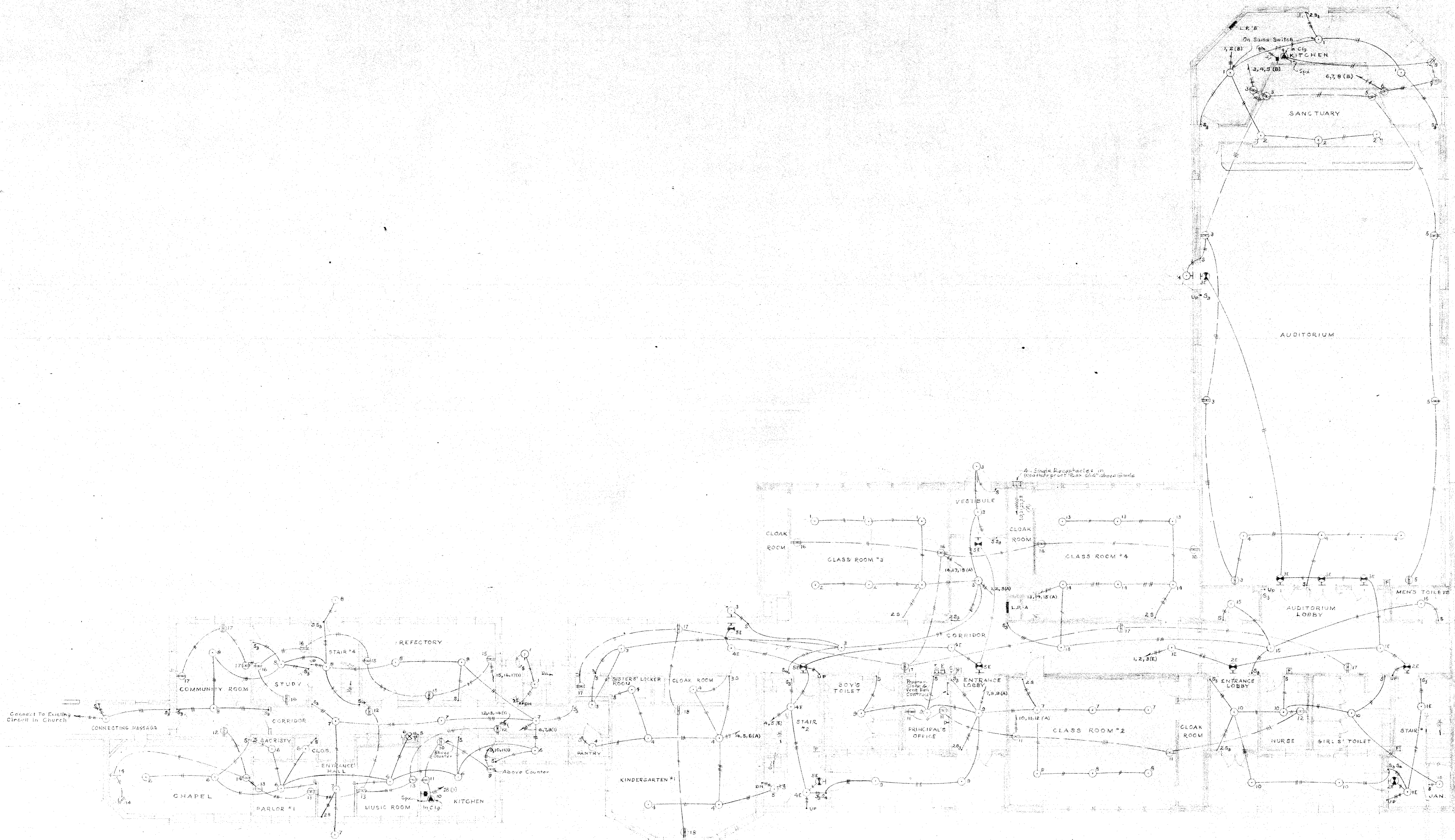


ELECTRIC WIRING

SCHOOL AUDITORIUM AND CONVENT
ST. WILLIAM OF YORK
R. G. STURCH
EDMONDSON AVE AND COCKS LINE
BALTIMORE, MARYLAND

HALL, BORDER AND DONALDSON
ELECTRICAL ENGINEERS
2511 N. CHARLES ST. BALTO. 16, MD.

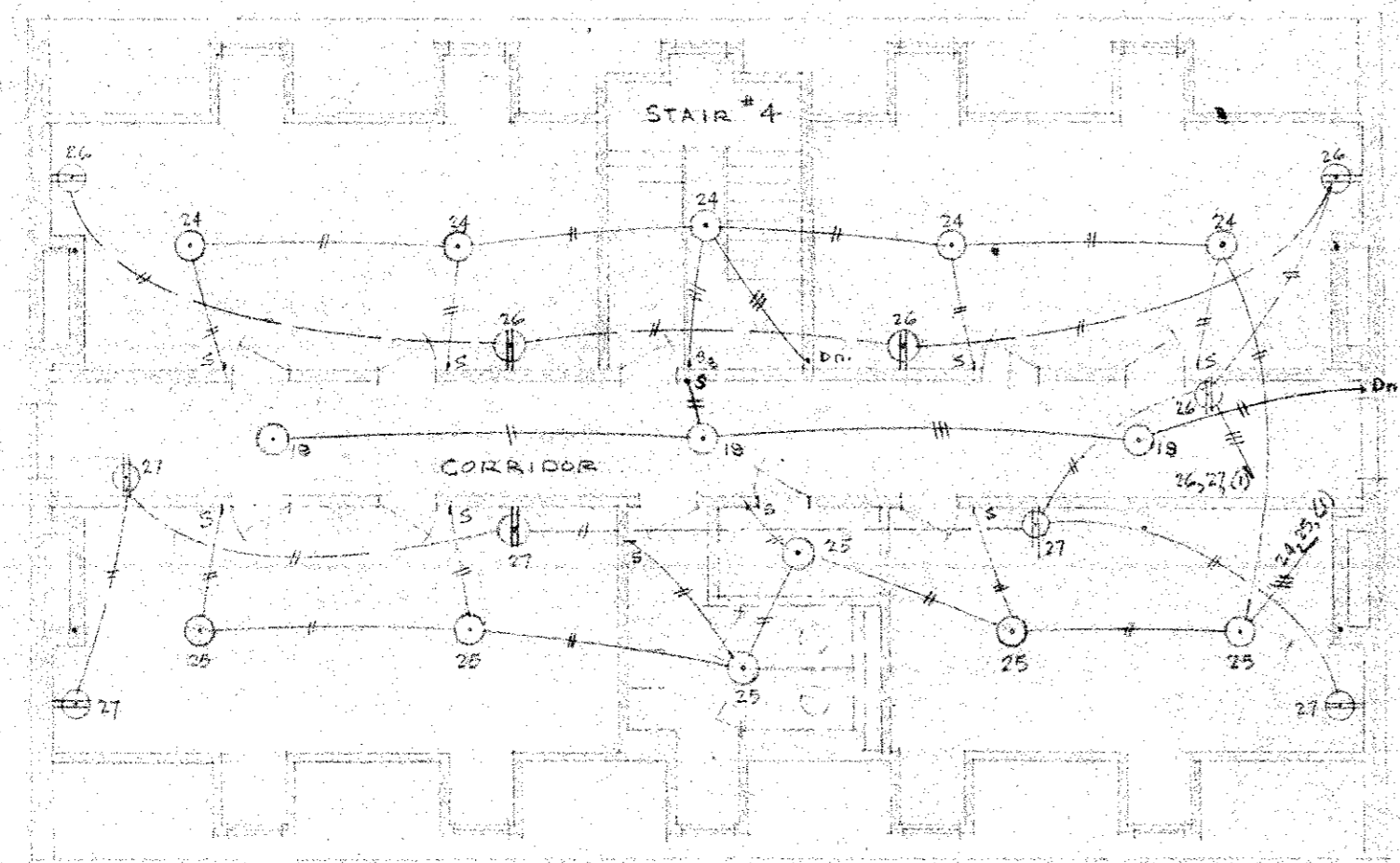
WILLIAM G. ROBERTSON JR., MECHANICAL ENGINEER



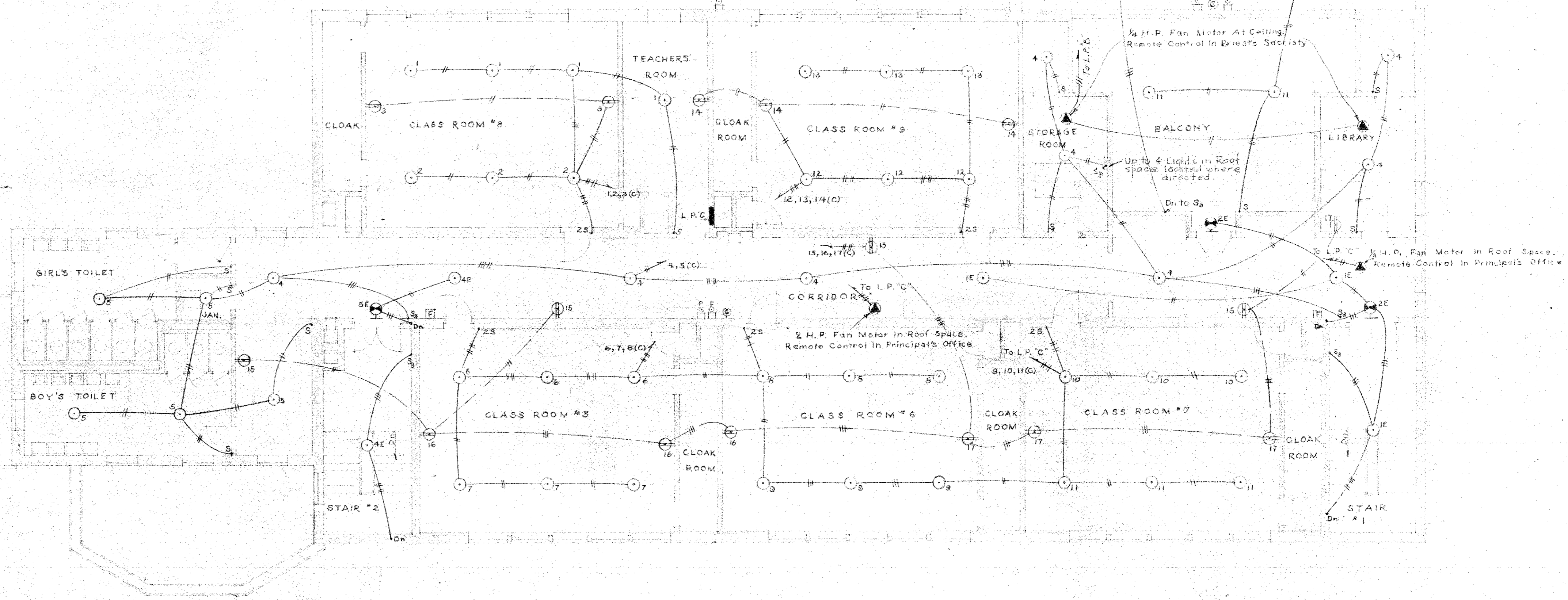
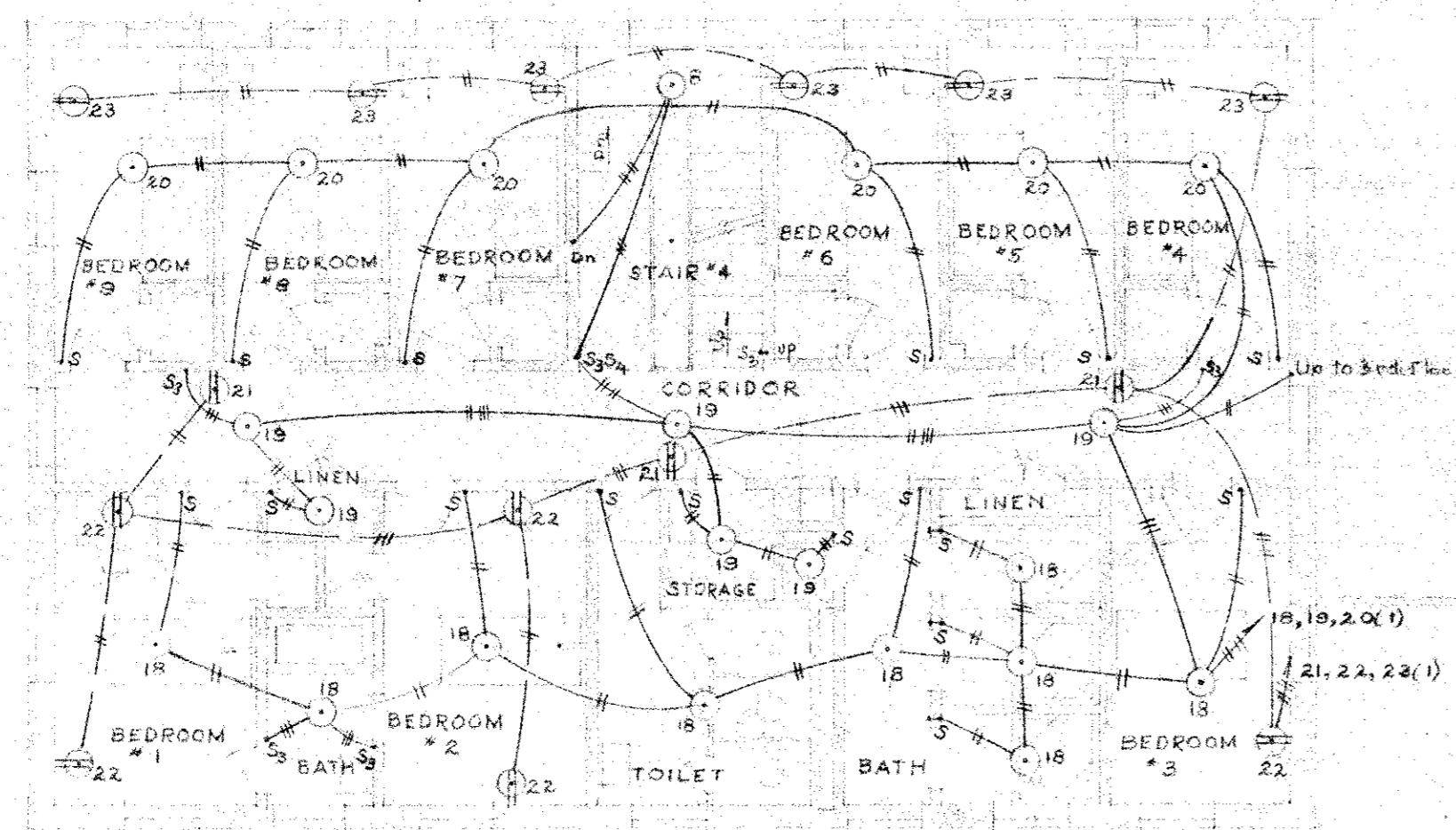
FIRST FLOOR PLAN
SCALE: 1/8" = 1'-0"

ELECTRIC WIRING

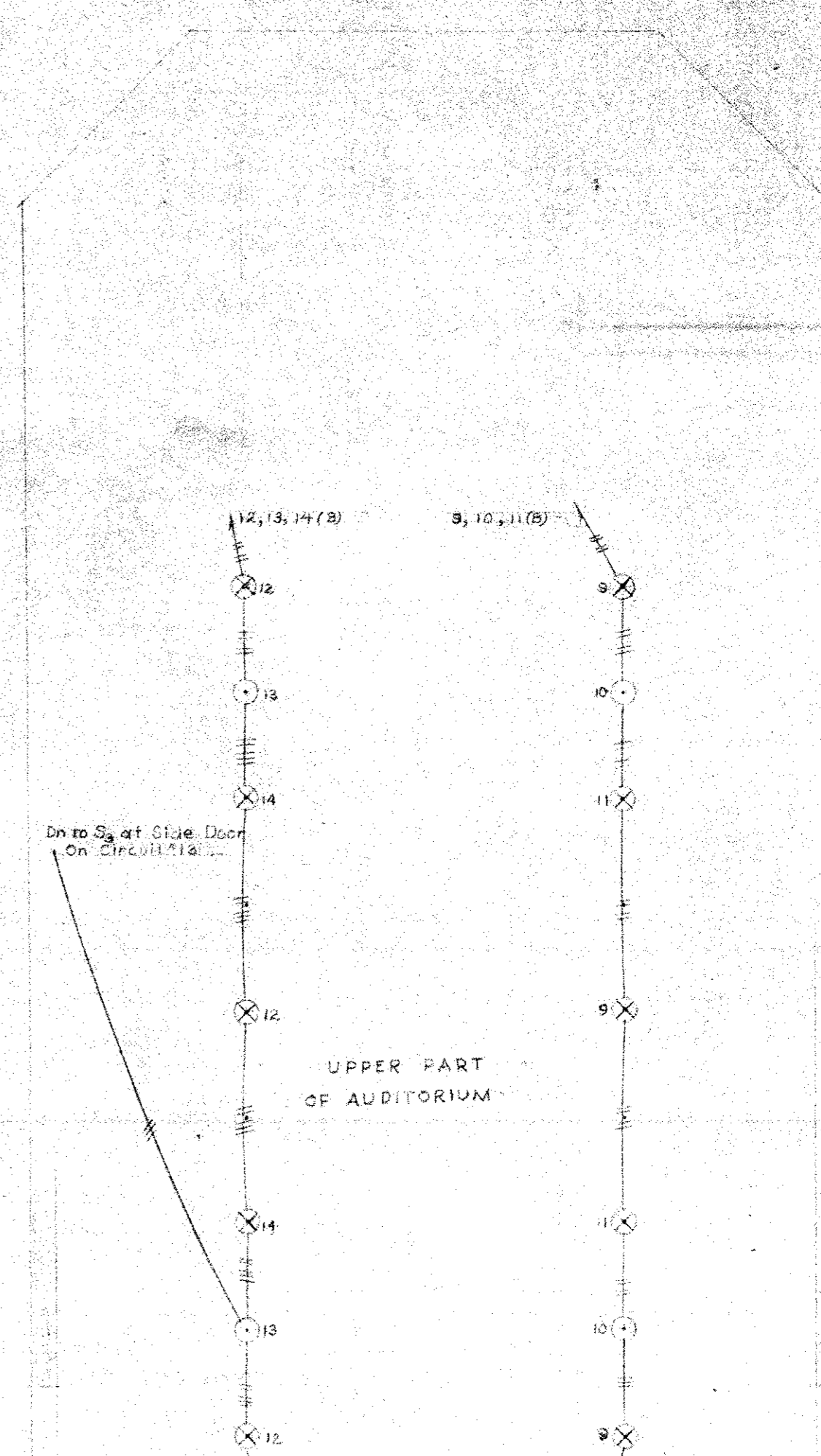
	SCHOOL AUDITORIUM AND CONVENT ST. WILLIAM OF COPK C. CHURCH EDMONSON AVE. AND COOKS LANE BALTIMORE MARYLAND.	COMMISSION 4711 DATE OCT. 15, 1914 SCALE AS NOTED DRAWING E-2
	HALL, BORDER AND DONALDSON ARCHITECTS 8111 N. CHARLES ST., BALTO., MD.	
	WILLIAM G. ROBERTSON JR., - MECHANICAL ENGINEER.	



THIRD FLOOR PLAN OF CONVENT
SCALE: 1/8"=1'-0"
Note: Provide Lighting & switches in Stairs & Corridor only.
Elsewhere provide outlet boxes with wiring taped & boxes covered.



SECOND FLOOR PLAN
SCALE: 1/8"=1'-0"



ELECTRIC WIRING

	SCHOOL AUDITORIUM AND CONVENT ST. WILLIAM'S PARISH BALTIMORE, MD.	CONTRACT NO. 2111 DATE DESIGNER CONTRACT VALUE CONTRACTOR
	HALL, BORDER AND DONALDSON ARCHITECTS 2111 N. CHARLES ST. BALTO., MD.	APPROVED BY WILLIAM G. ROBERTSON JR.
	WILLIAM G. ROBERTSON JR. - MECHANICAL ENGINEER	E-3
	STATE OF MARYLAND	