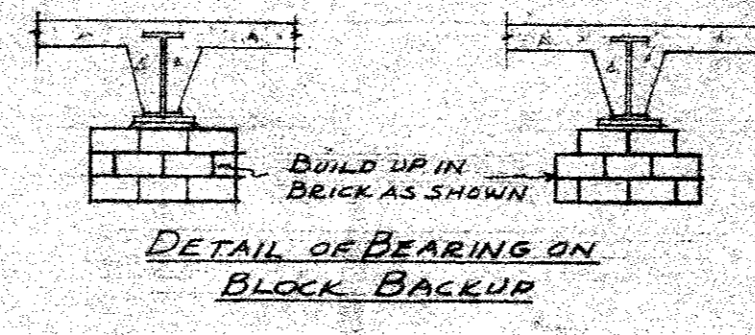


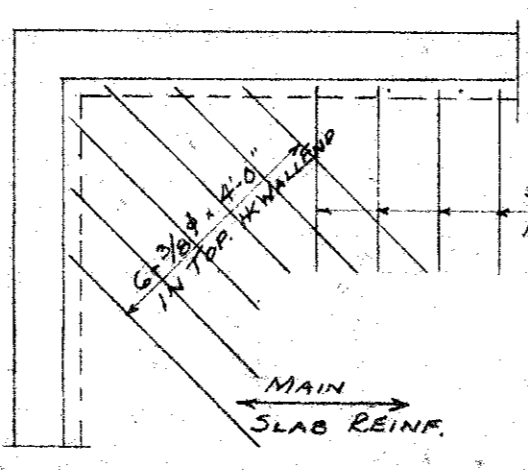
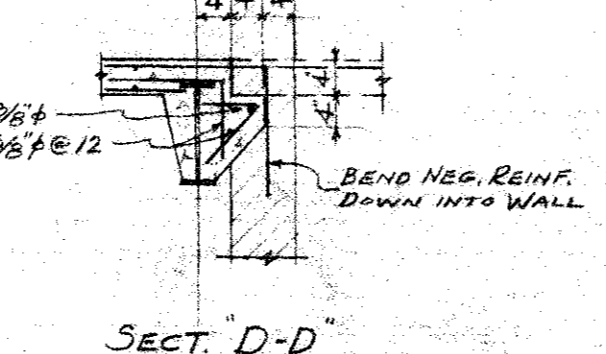
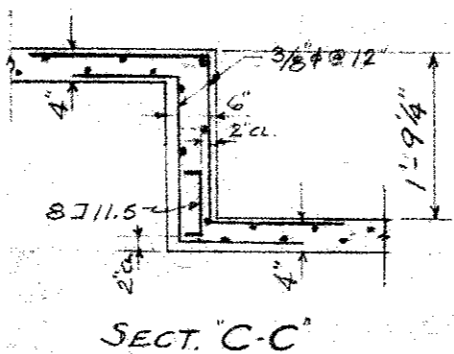
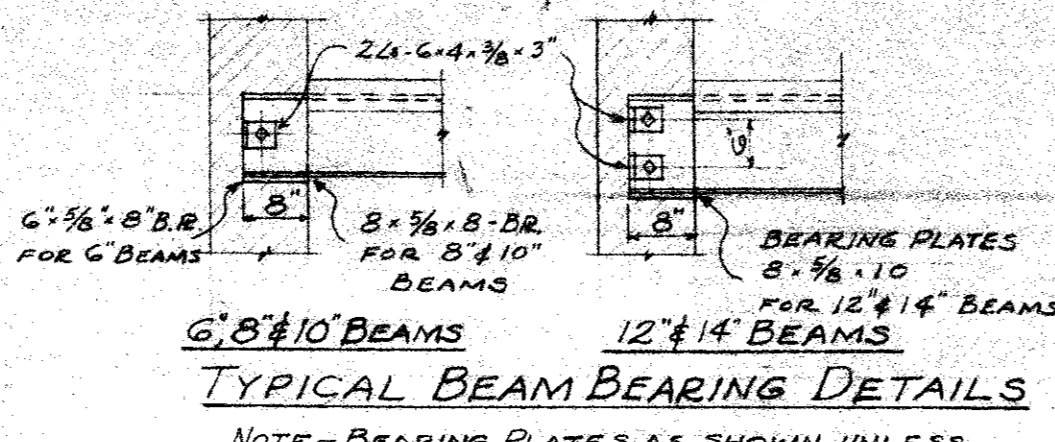
TYPICAL FLOOR SLAB REINFORCEMENT
SCALE 1/2"=1'-0"



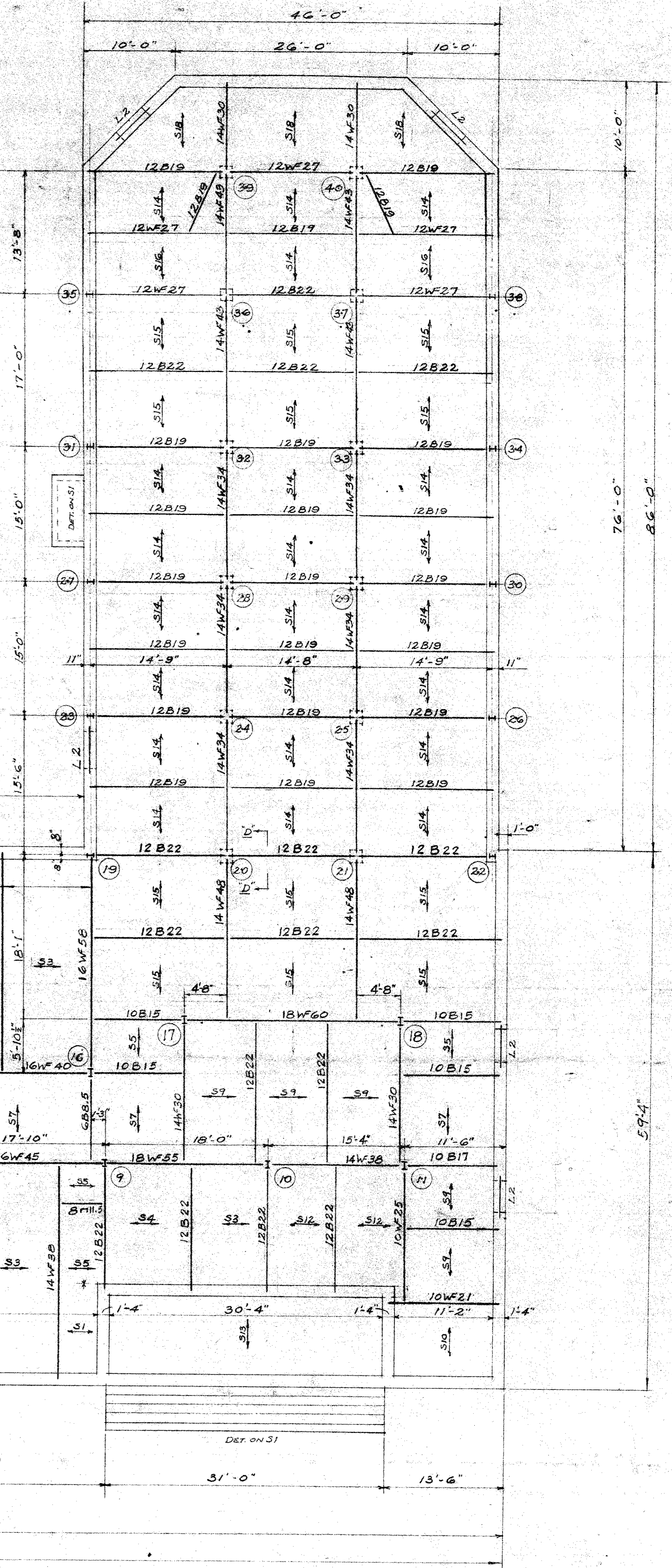
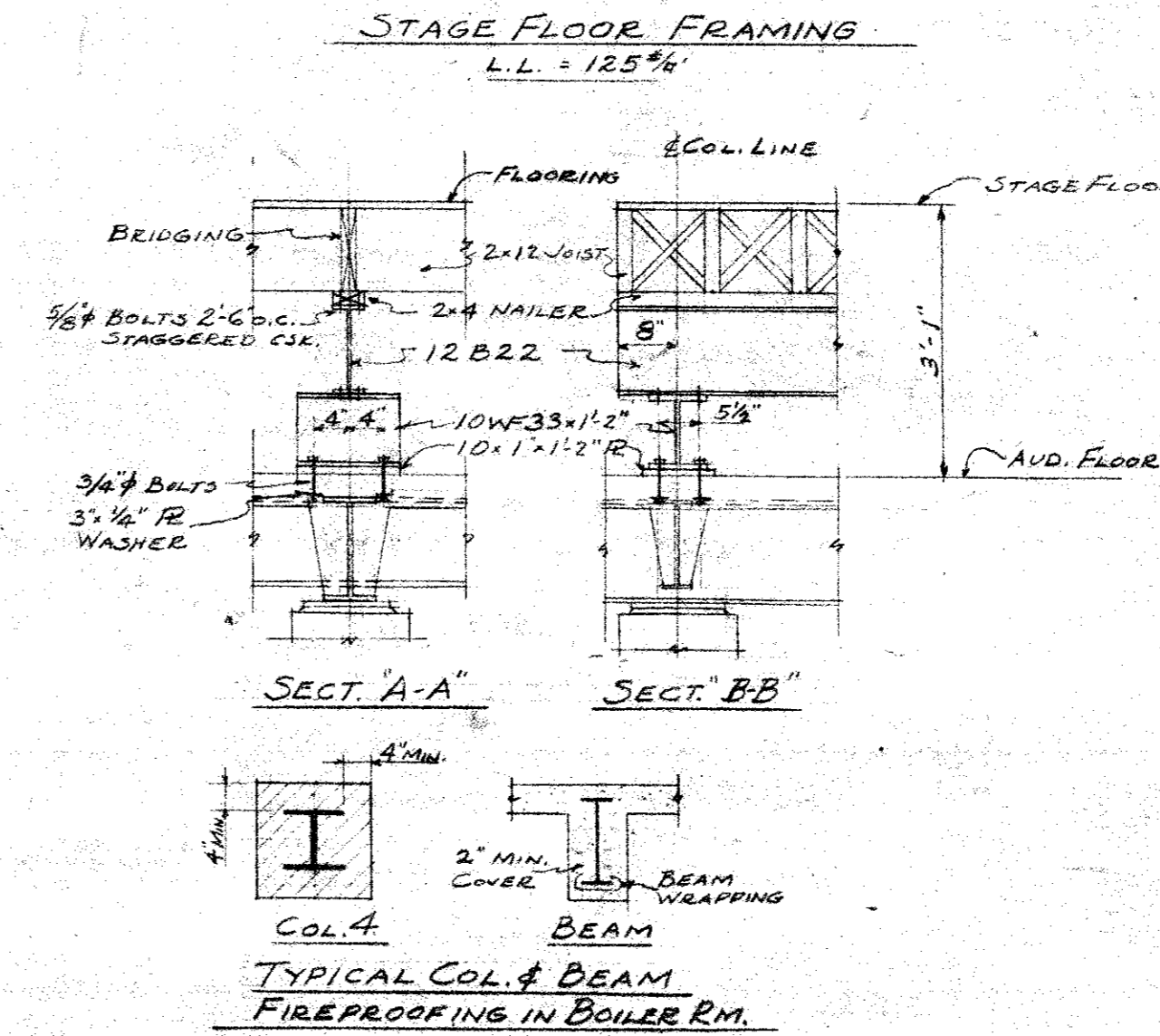
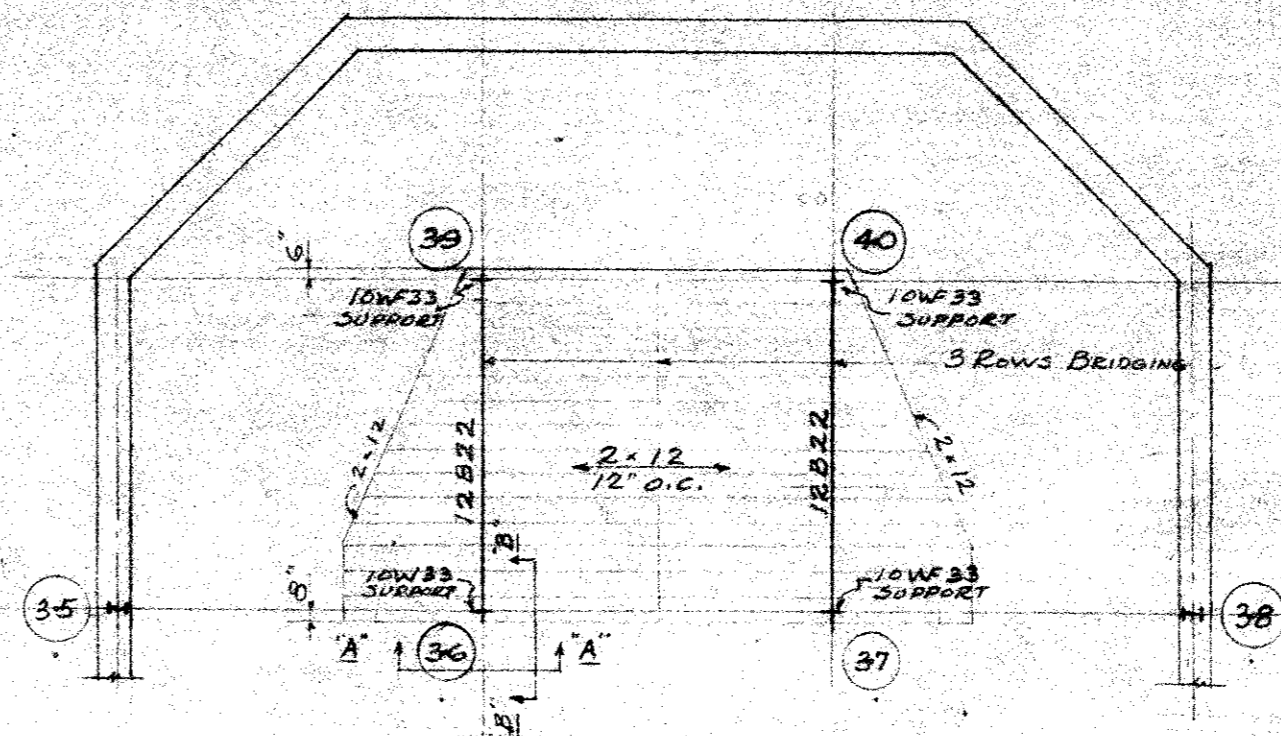
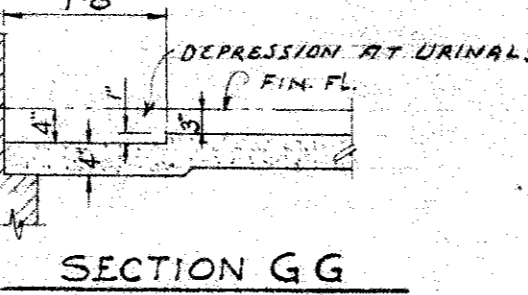
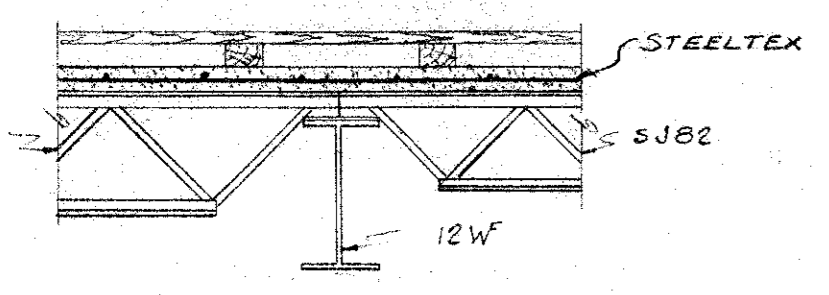
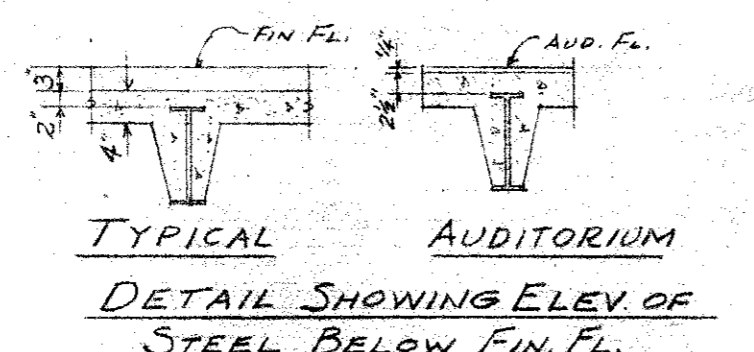
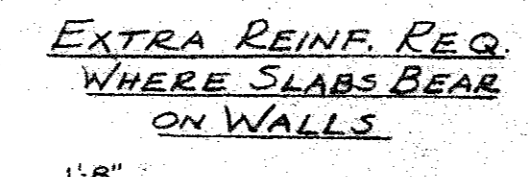
SLAB SCHEDULE				
MARK	THICK	STRAIGHT	MAIN REINFORCING	TEMP REINP.
S1	4"	3/8" @ 24"	3/8" @ 24"	3/8" @ 18"
S2	4"	3/8" @ 20"	3/8" @ 20"	3/8" @ 18"
S3	4"	3/8" @ 20"	3/8" @ 24"	3/8" @ 18"
S4	4"	3/8" @ 17"	3/8" @ 17"	3/8" @ 18"
S5	4"	3/8" @ 24"	3/8" @ 24"	3/8" @ 18"
S6	4"	3/8" @ 13"	3/8" @ 10"	3/8" @ 11"
S7	4"	3/8" @ 17"	3/8" @ 17"	3/8" @ 18"
S8	4"	3/8" @ 18"	3/8" @ 18"	3/8" @ 18"
S9	4"	3/8" @ 27"	3/8" @ 27"	3/8" @ 18"
S10	4"	3/8" @ 19"	3/8" @ 22"	3/8" @ 18"
S11	4"	3/8" @ 24"	3/8" @ 24"	3/8" @ 18"
S12	4"	3/8" @ 24"	3/8" @ 24"	3/8" @ 18"
S13	4"	1/2" @ 11"	1/2" @ 11"	3/8" @ 12"
S14	4"	3/8" @ 20"	3/8" @ 20"	3/8" @ 18"
S15	4"	3/8" @ 14"	3/8" @ 15"	3/8" @ 18"
S16	4"	3/8" @ 10"	3/8" @ 18"	3/8" @ 18"
S17	4"	3/8" @ 16"	3/8" @ 20"	3/8" @ 18"
S18	4"	3/8" @ 11"	3/8" @ 9"	3/8" @ 18"

LINTEL SCHEDULE			
MARK	SIZE	SHAPE	REMARKS
L1	4L-4-3/4" @ 1/2"	JLL	
L2	4L-3-3/4" @ 3/4"	JLL	
L3	4L-4-3/4" @ 3/4"	JLL	
L4	2L-4-3/4" @ 3/4"	JLL	BRICK ARCH. OUTSIDE CASE
L5	3L-4-3/4" @ 3/4"	JLL	
L6	2L-4-3/4" @ 3/4"	JLL	BRICK ARCH. OUTSIDE CASE
L7	3L-4-3/4" @ 3/4"	JLL	
L8	2L-10-1/2" @ 3/4"	JLL	WELDED 6" MIN. BEAR. BEHIND OUTSIDE CASE
L9	1L-4-3/4" @ 3/4"	JLL	
L10	3L-4-3/4" @ 3/4"	JLL	
L11	3L-4-3/4" @ 3/4"	JLL	
L12	2L-5-3/4" @ 3/4"	JLL	
L13	2L-3-3/4" @ 3/4"	JLL	BRICK ARCH. OUTSIDE CASE
L14	2L-3-3/4" @ 3/4"	JLL	

NOTE - LINTELS TO HAVE 6" MIN. BEAR.
PARTITIONS - PROVIDE ONE 3/4" @ 3/4"
FOR EACH 4" OF THICKNESS FOR
OPENINGS UNDER 4" AND ONE
4" @ 3/4" @ 3/4" FOR EACH 4" OF THICKNESS
FOR OPENINGS OVER 4" IN SPAN.



NOTE - THIS SECTION APPLIES
ONLY UNDER ALTERNATE #2



FIRST FLOOR FRAMING PLAN
SCALE 1/8"=1'-0"

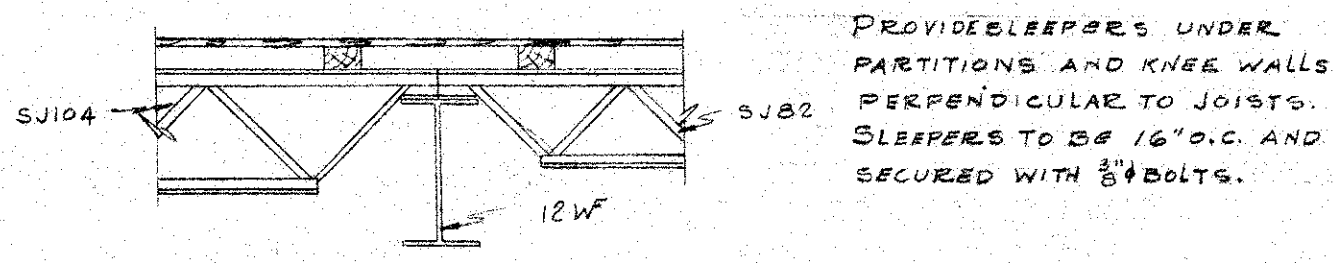
FOR GENERAL NOTES SEE S-3

HOBS & LEE
Consulting Engineers
STRUCTURAL
215N. CHARLES ST., BALTO., MD.

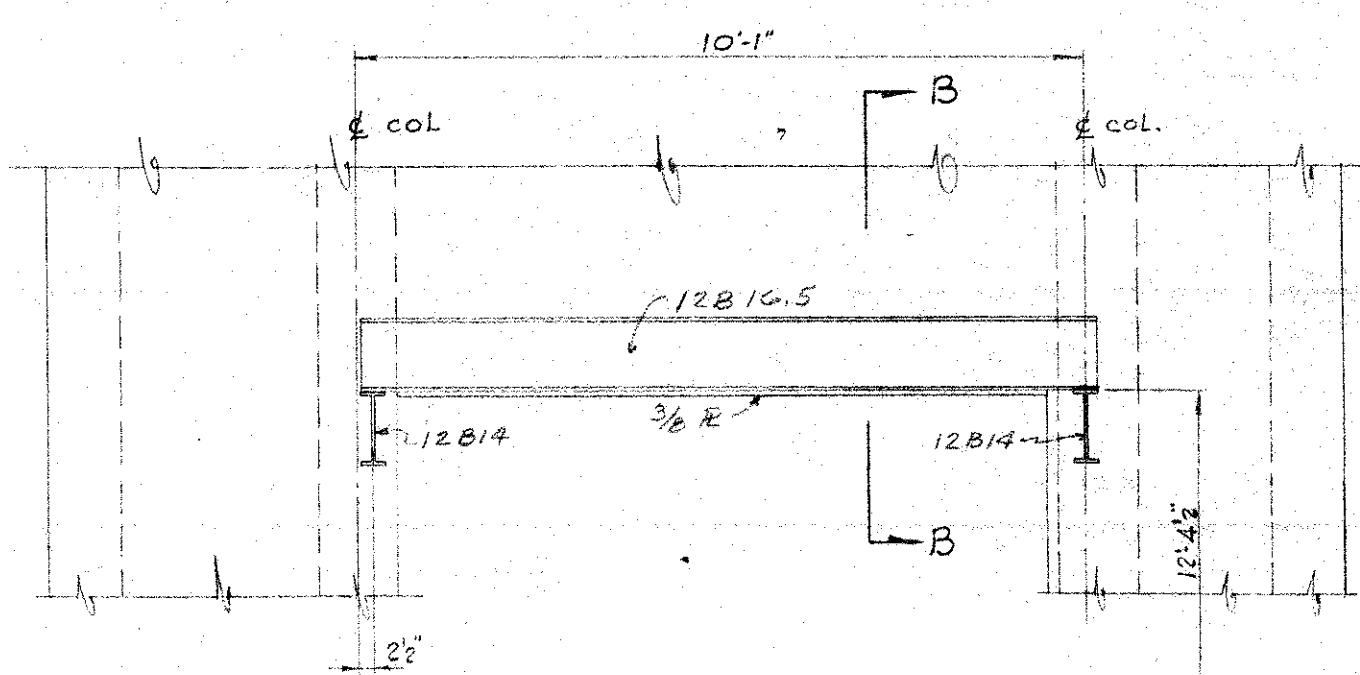
**SCHOOL AUDITORIUM
AND CONVENT -
ST. WILLIAM OF YORK
& C. CHURCH
EDMUNSON AVE. AND COOK LANE
BALTIMORE, MARYLAND**

**HALL BORDER AND
DONALDSON**
ARCHITECTS
117 N. CHARLES ST., BALTO., MD.

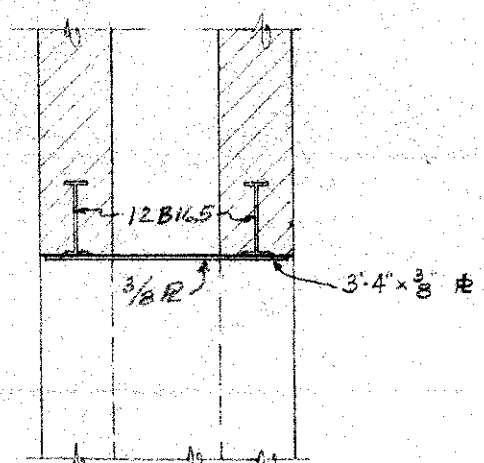
DATE: OCT. 15, 1947
SCALE: AS NOTED
SHEET: S2



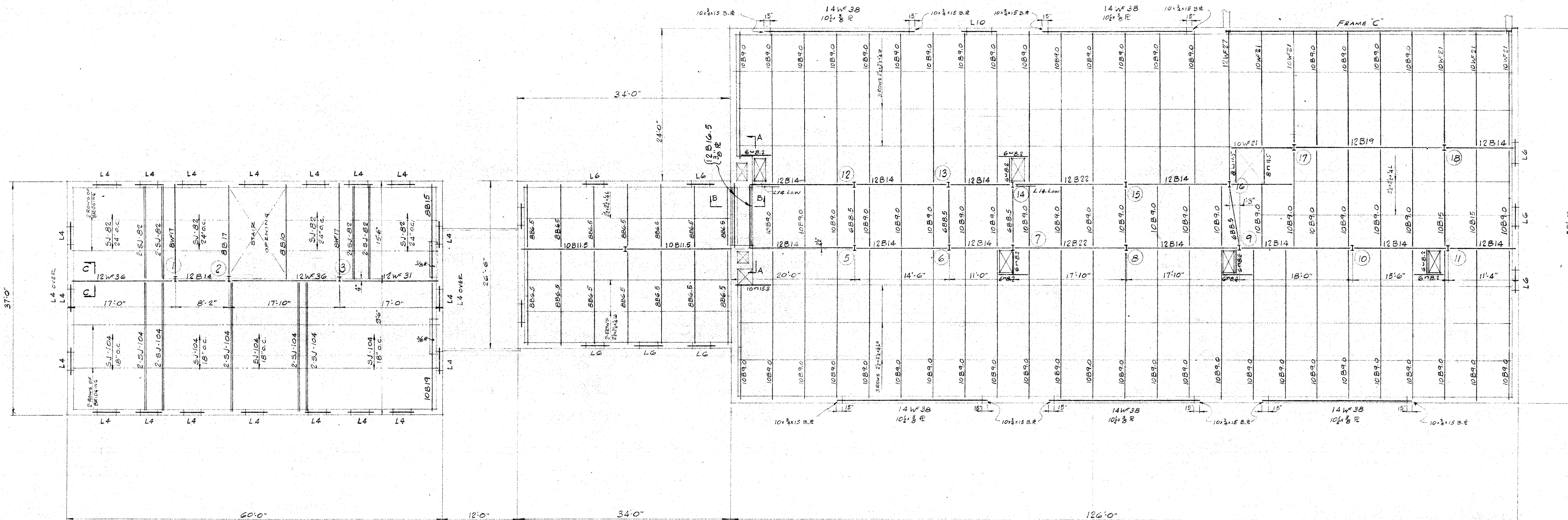
SECTION CC
SCALE 3/4"=1'-0"



SECTION AA
SCALE 3/4"=1'-0"



SECTION BB
SCALE 3/4"=1'-0"



ATTIC FRAMING PLAN

SECOND FLOOR CEILING FRAMING

FOR GENERAL NOTES SEE S-3

HOBBS & LAW
STRUCTURAL
2118 N. CHARLES ST., BALTO., MD.

SCHOOL AUDITORIUM
AND CONVENT
ST. WILLIAM OF YORK R.
R. C. CHURCH
EDMONDSON AVE. AND COOKS LANE
BALTIMORE, MARYLAND.
HALL, BORDER AND
DONALDSON
ARCHITECTS
2111 N. CHARLES ST., BALTO., MD.

4717
REV. 15-47
54

