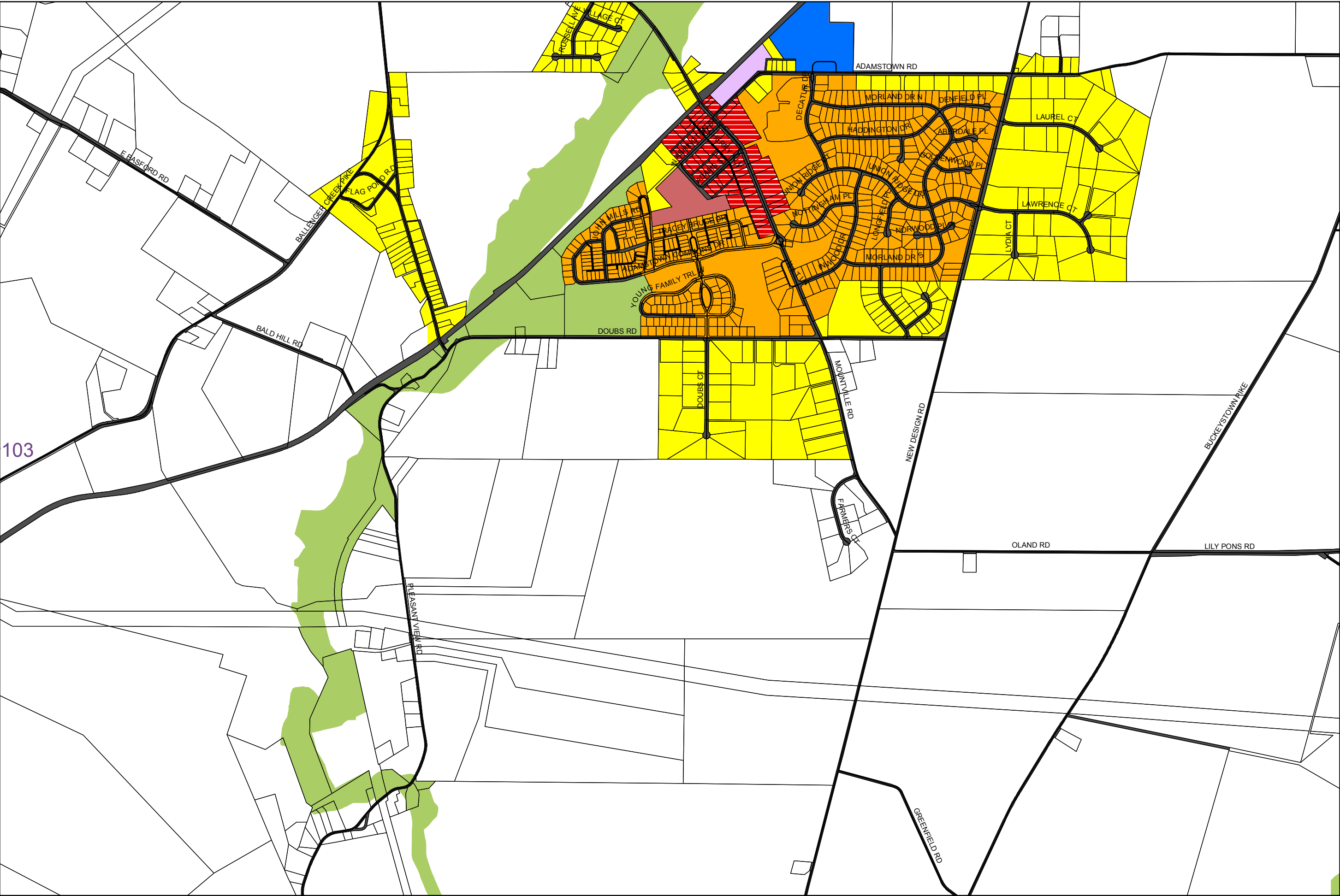
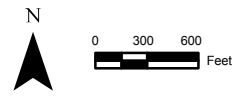


Zoning

Adopted as Part of the
 Countywide
 Comprehensive Plan
 Ordinance # 10-05-540
 Effective: April 8, 2010
 Tax Map 103 amended:
 Ord.#14-29-684, 10-24-2014



- A - Agricultural
- RC - Resource Conservation
- OSR - Open Space Recreation
- R1 - Low Density Residential
- R3 - Low Density Residential
- R5 - Medium Density Residential
- R8 - Medium Density Residential
- R12 - High Density Residential
- R16 - High Density Residential
- PUD - Planned Unit Development
- VC - Village Center
- GC - General Commercial
- GI - General Industrial
- LI - Limited Industrial
- ORI - Office/Research/Industrial
- MX - Mixed Use
- MXD - Mixed Use Development
- MM - Mineral Mining
- Ie - Institutional
- Municipality



This map is intended for general planning purposes only and is not intended for site specific analysis. While efforts have been made to ensure the accuracy of this map, Frederick County recognizes that inaccuracies may exist and accepts no responsibility for positional inaccuracies, errors, or omissions. Reliance on the data presented on this map is at the risk of the user. This map is for illustration purposes only and should not be used for surveying, engineering, or site-specific analysis. Created by Frederick County Community Development Division

For detailed Zoning District Boundaries consult the official Zoning Maps located at:
 Community Development Division
 Frederick County Government
 30 N. Market St
 Frederick, MD 21701
 301-600-1138

Date: Dec 03, 2014

1	2	3	4	5					
6	7	8	9	10					
11	12	13	14	15	16				
17	18	19	20	21					
22	23	24	25	26	27	28			
29	30	31	32	33	34	35	36		
37	38	39	40	41	42	43	44		
45	46	47	48	49	50	51	52	53	
54	55	56	57	58	59	60	61	62	
63	64	65	66	67	68	69	70	71	
72	73	74	75	76	77	78	79	80	81
82	83	84	85	86	87	88	89	90	
91	92	93	94	95	96	97	98	99	
100	101	102	103	104	105	106			
108	109	110	111						
112	113								